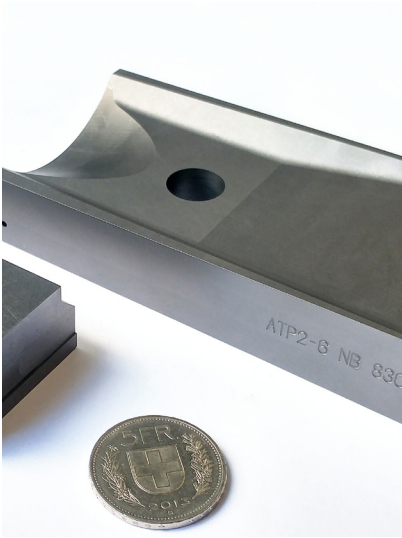


THERMAL MANAGEMENT MATERIAL



Innovative Graphite Composites for Thermal Management Applications.

As part of its accelerator R&D programme, CERN has developed a family of novel, graphite-based composite materials to perform reliably in extreme thermo-structural conditions. The most outstanding results have been with Molybdenum Carbide-Graphite composites (MoGr) – developed in collaboration with Brevetti Bizz (IT) – that exhibit thermal conductivities up to $900 \text{ W m}^{-1}\text{K}^{-1}$, very low coefficients of thermal expansion, and a density lower than aluminium.

These properties make the materials suitable for applications where efficient thermal management and/or high temperature operability are of significant importance. The composition may also be modified to have properties required for specific applications.

AREA OF EXPERTISE

- Material Science

IP STATUS

- Licensing of CERN proprietary materials and methods
- Collaborative R&D on development of similar materials
- Consultancy on material design and production methods

CONTACT PERSON

amy.bilton@cern.ch

Find out more at: kt.cern

APPLICATIONS

Thermal management components for...

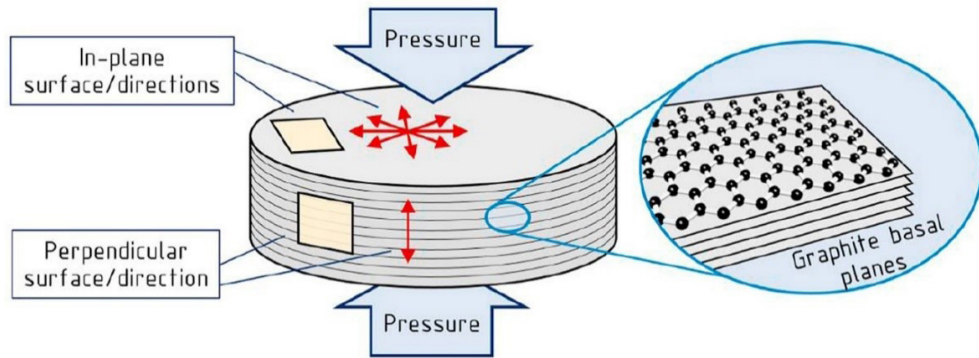
- High-end electronics (e.g. heat spreaders and cooling blocks)
- Automobile components (e.g. cooling for advanced braking systems)
- Aerospace components
- Other thermal-management devices

FEATURES

- Thermal conductivity up to $900 \text{ W m}^{-1}\text{K}^{-1}$
- Density as low as 2.5 g cm^{-3}
- Coefficient of thermal expansion similar to semiconductors
- Resistant to temperatures higher than $2000 \text{ }^\circ\text{C}$ (in inert atmosphere) or $400 \text{ }^\circ\text{C}$ in air
- Resistance to radiation damage
- Produced by Pulsed Electric Current Sintering (PECS), also known as Spark Plasma Sintering (SPS) or Field Assisted Sintering
- Milled to final shape with conventional machining techniques
- Optional superficial coatings such as metallic molybdenum can be applied

Continue Reading »

>> The morphology of the components and the manufacturing process lead to a transversely isotropic material: the in-plane and perpendicular directions are defined as those parallel and perpendicular to the graphite basal planes.



Physical and mechanical properties*		⊥	
Density	2.5-2.6		[g·cm ⁻³]
Electrical conductivity	0.9-1.1	0.05-0.07	[MS·m ⁻¹]
Specific heat	0.6-0.65		[J·g ⁻¹ ·K ⁻¹]
Thermal diffusivity	430-530	28-37	[mm ² ·s ⁻¹]
Thermal conductivity	650-900	45-65	[W·m ⁻¹ ·K ⁻¹]
CTE 20-200°C	1.7-2.7	8-12	[10 ⁻⁶ ·K ⁻¹]
Flexural strength	60-80	10-12	[MPa]
Elastic modulus	60-85	4-5	[GPa]
Flexural strain to rupture	0.18-0.26	0.45-0.72	[%]

* Transversely isotropic material: In-plane (||) and through-plane (⊥) directions. At 20°C.

>> Summary of thermo-mechanical characterisation results of different grades of MoGr, at room temperature.

ADVANTAGES

- Excellent performance in extreme thermo-structural conditions
- Performance validated in use at CERN
- Twice the thermal conductivity and ¼ of the weight as copper

LIMITATIONS

- Requires complex production equipment
- Production currently limited to block sizes of 230mm diameter, 30mm height

Further reading >>

Development and properties of high thermal conductivity molybdenum carbide – graphite composites. Carbon Journal, volume 135 (2018) <https://doi.org/10.1016/j.carbon.2018.04.010>

